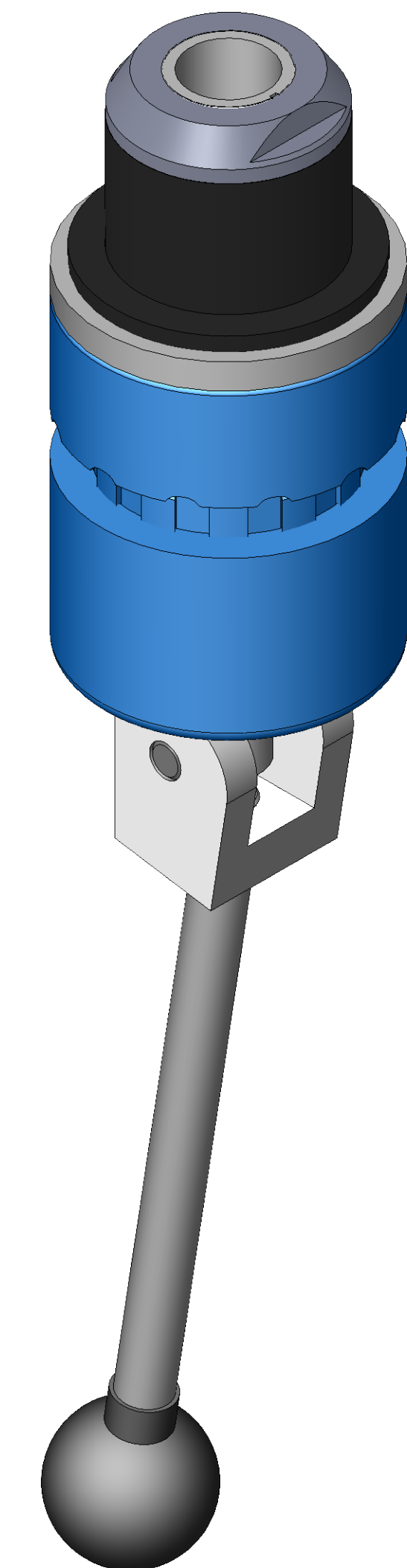


SECTION A-A
SCALE 1 : 1

ITEM NO.	PART NUMBER	DESCRIPTION	QTY.
10	MACH-004215	Body w No Fill Port, CTS, HI36	1
20	MACH-004269	Cap, CTS, HI36-38	1
30	MACH-005529	Clevis, CTS, HI36-38	1
40	MACH-004680	Stem w No Fill Port, CTS, HI36	1
50	MACH-005605	Lever, CTS, HI36-38	1
60	HDW-005573	Knob, Connect, McMaster, 6046K4	1
70	HDW-005417	Spring, Connect, LC-085N-02-S	1
80	HDW-034019	Washer, Connect, Flat Reid, FW-5	1
90	HDWX-039054	Dowel Pin, Connect, .3125 x 1.25in	1
100	HDWX-035090	Screw, Socket Set, .25-20 x .3125in	1
110	HDW-005552	Sleeve Bearing, Connect, 1.504 ID x 1.754 OD x 1.0 LG	1
120	MACH-004241	Seal Holder, CTS, CI36-AB	1
130	SEAL-004961	Seal, CTS, CI36-NPT-1500	1
140	MACH-004349	Nose, CTS, CI36-AB	1



REVISIONS			
REV.	DESCRIPTION	DATE	APPROVED
A	Initial Release	01-02-2019	JAW
B	Nose material changed from brass to 316 stainless steel	12-05-2025	KM



10100 PROGRESS WAY HARRISON, OH 45030

SIZE	DESCRIPTION	REV
D	Connect Assembly, CTS, HI36-NPT-1500	B
PART NUMBER		REV
CTSC-003713		B
DATE	DRAWN BY	CHECKED BY
1/2/19		KM
SHEET		OF
1		1