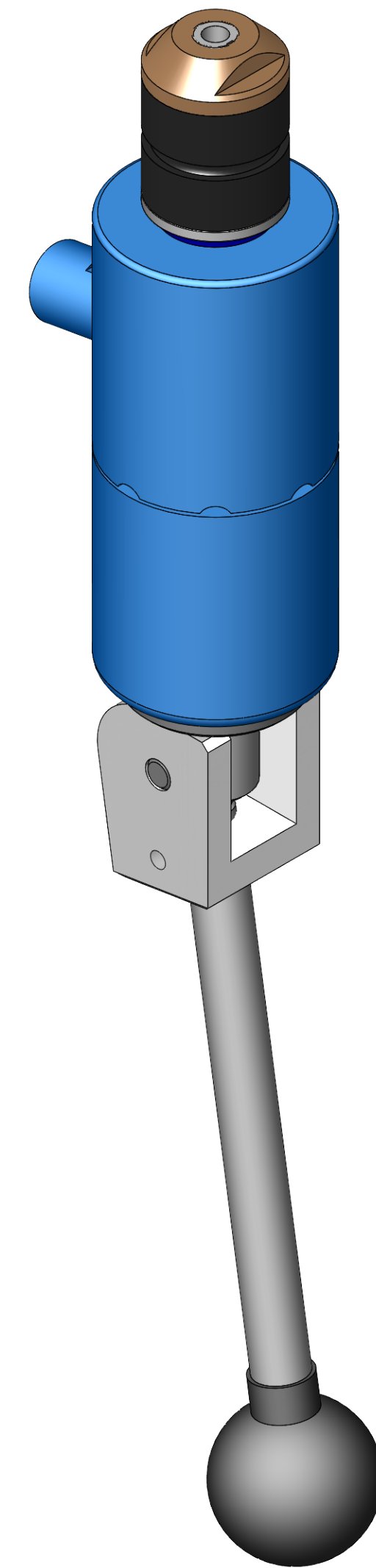


SECTION A-A



ITEM NO.	PART NUMBER	DESCRIPTION	QTY.
10	MACH-004210	Body w Fill Port, CTS, HI33	1
20	MACH-004268	Cap, CTS, HI33-35	1
30	MACH-005527	Clevis, CTS, HI33-35	1
40	MACH-005604	Lever, CTS, HI33-35	1
50	HDW-005573	Knob, Connect, McMaster, 6046K4	1
60	MACH-004674	Stem w Fill Port, CTS, HI33	1
70	HDW-034019	Washer, Connect, Flat Reid, FW-5	1
80	HDW-005412	Spring, Connect, LC-063L-2-S	1
90	HDWX-035090	Screw, Socket Set, .25-20 x .3125in	1
100	HDWX-035093	Dowel Pin, Connect, .25 x 1.125in	1
110	SEAX-008541	ORING, 115, Buna-N	2
120	MACH-005532	Adapter, CTS, HI30-35	1
130	MACH-004585	Spacer, CTS, CI33	1
140	MACH-004554	Washer, CTS, HI33-AD1	1
150	SEAL-005335	Seal, CTS, HI33-AD1	1
160	MACH-004398	Nose, CTS, HI33-AD1	1



10100 PROGRESS WAY HARRISON, OH 45030

SIZE D	DESCRIPTION Connect Assembly, CTS, HIF33-AD1	REV A
PART NUMBER CTSC-003528		
DATE 10/19/18	DRAWN BY CHECKED BY JAW	SHEET 1 OF 1

FILE LOCATION: C:\Solidworks\PDM\PDW\R&D Product Development\CTS Connects\HI\Connect Assembly\HIF\HIF33\CTSC-003528

Tuesday, July 1, 2025