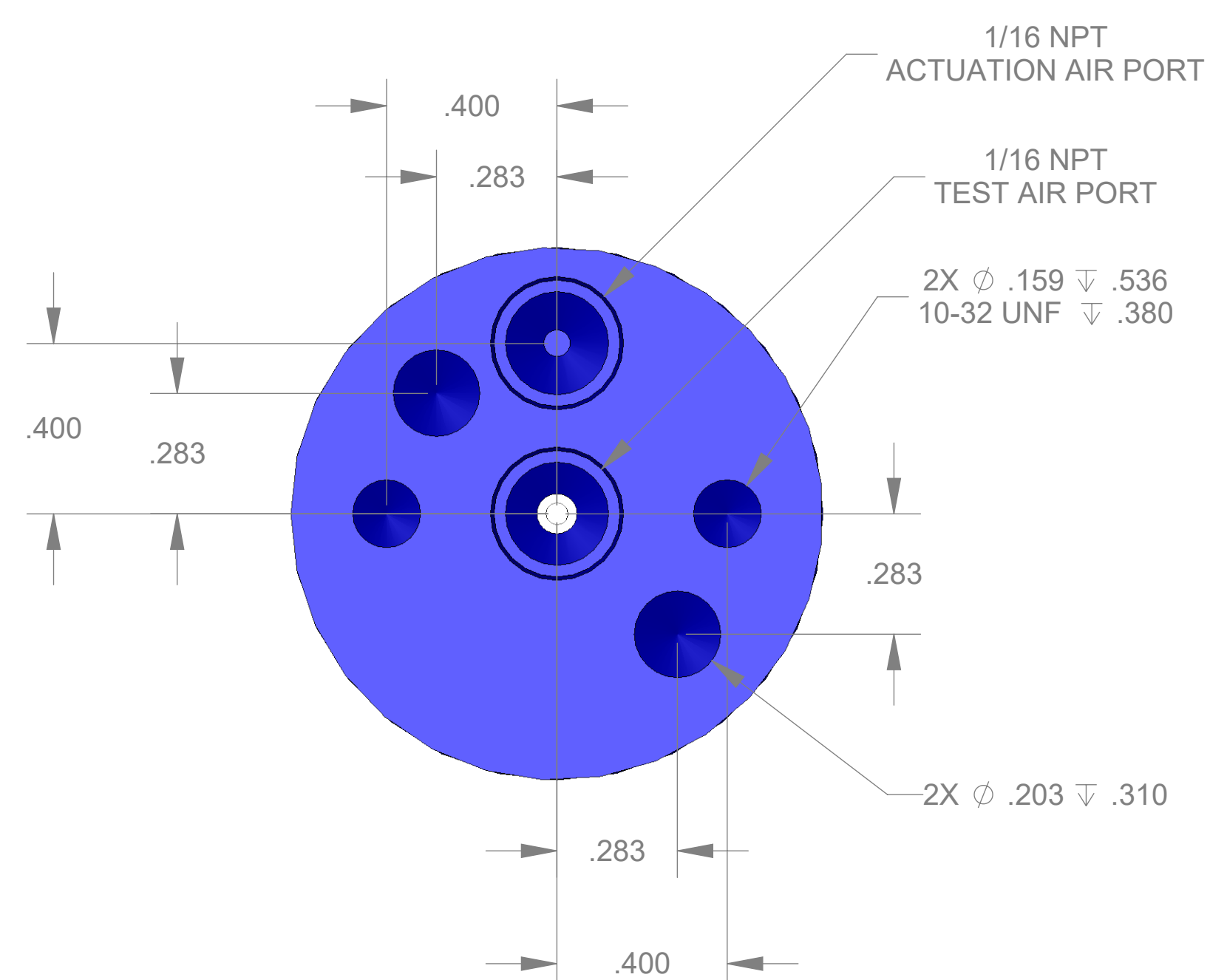
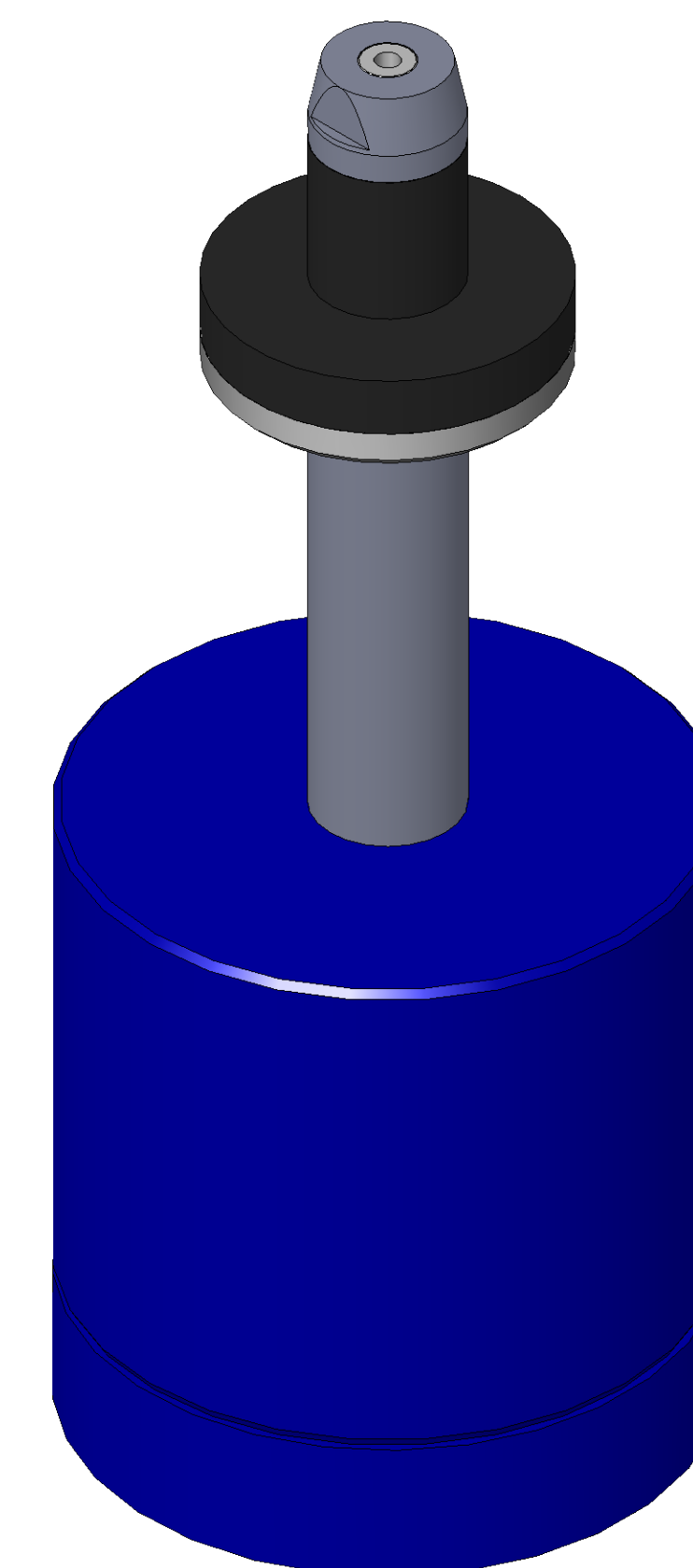


SECTION A-A  
SCALE 3 : 1

ITEM NO.	PART NUMBER	DESCRIPTION	QTY.
10	MACH-004180	BODY, CTS, CI30	1
20	MACH-004247	Cap, CTS, CI30	1
30	MACH-004276	Nose, CTS, CI30-AA	1
40	MACH-004424	Washer, CTS, CI30-SAE-0375	1
50	MACH-054199	STEM, CTS, CI30-E1.0	1
60	SEAL-004746	Seal, CTS, CI30-SAE-0375	1
70	SEAL-005446	CI30-ORING 009	1
80	SEAL-005447	CI30-ORING 119	1
90	MACH-004572	Extension Spacer, CTS, CI30	1



REVISIONS			
REV.	DESCRIPTION	DATE	APPROVED
A	Initial Release	02-02-2026	KM
B	Nose material changed from brass to 316 stainless steel	04-06-2026	KM



10100 PROGRESS WAY HARRISON, OH 45030

SIZE	DESCRIPTION			
D	Connect Assembly, CTS, CI30-SAE-0375-E1.0			
PART NUMBER	REV			
CTSC-002354	B			
DATE	DRAWN BY	CHECKED BY	SHEET	OF
7/01/15	KM	KM	1	1