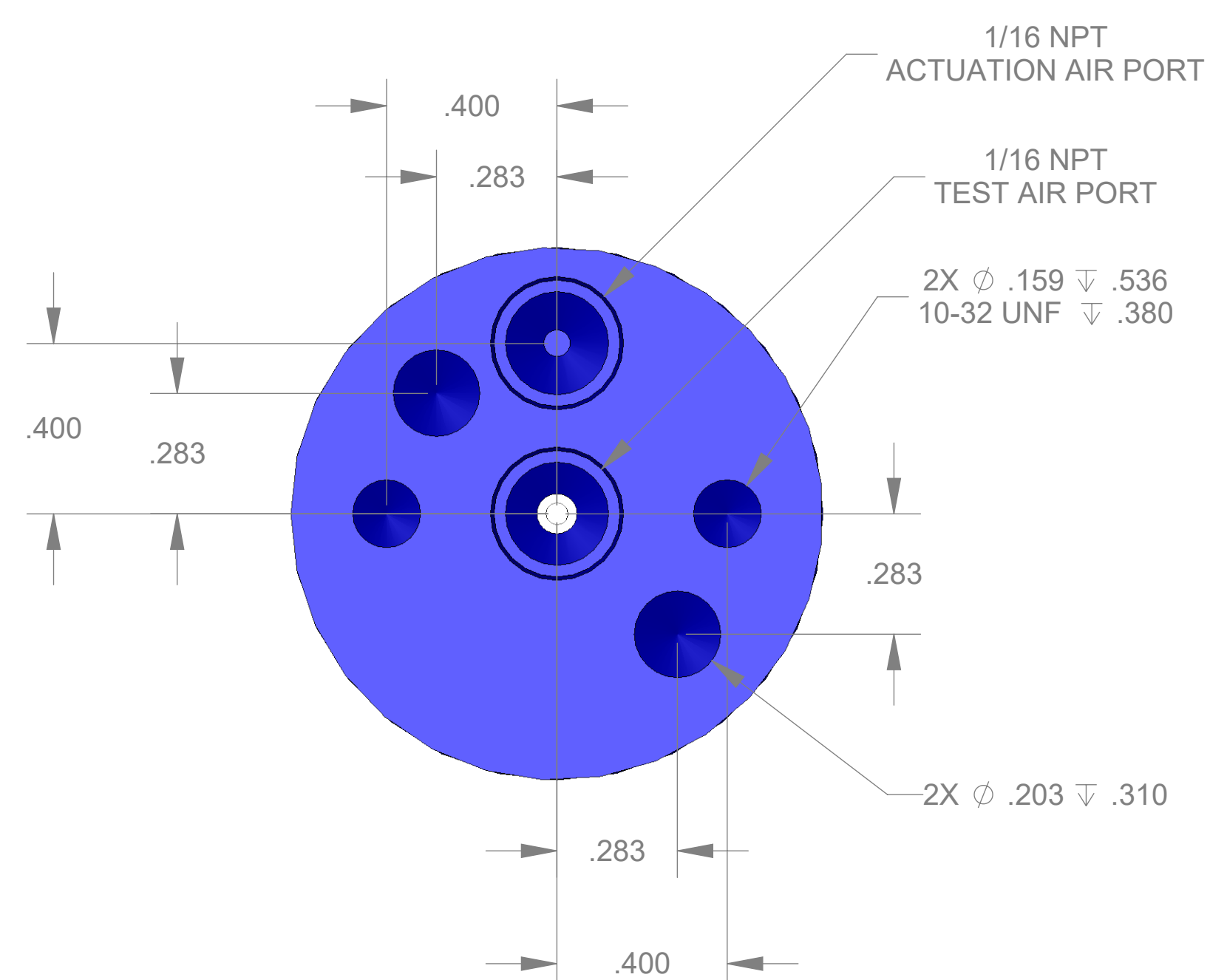
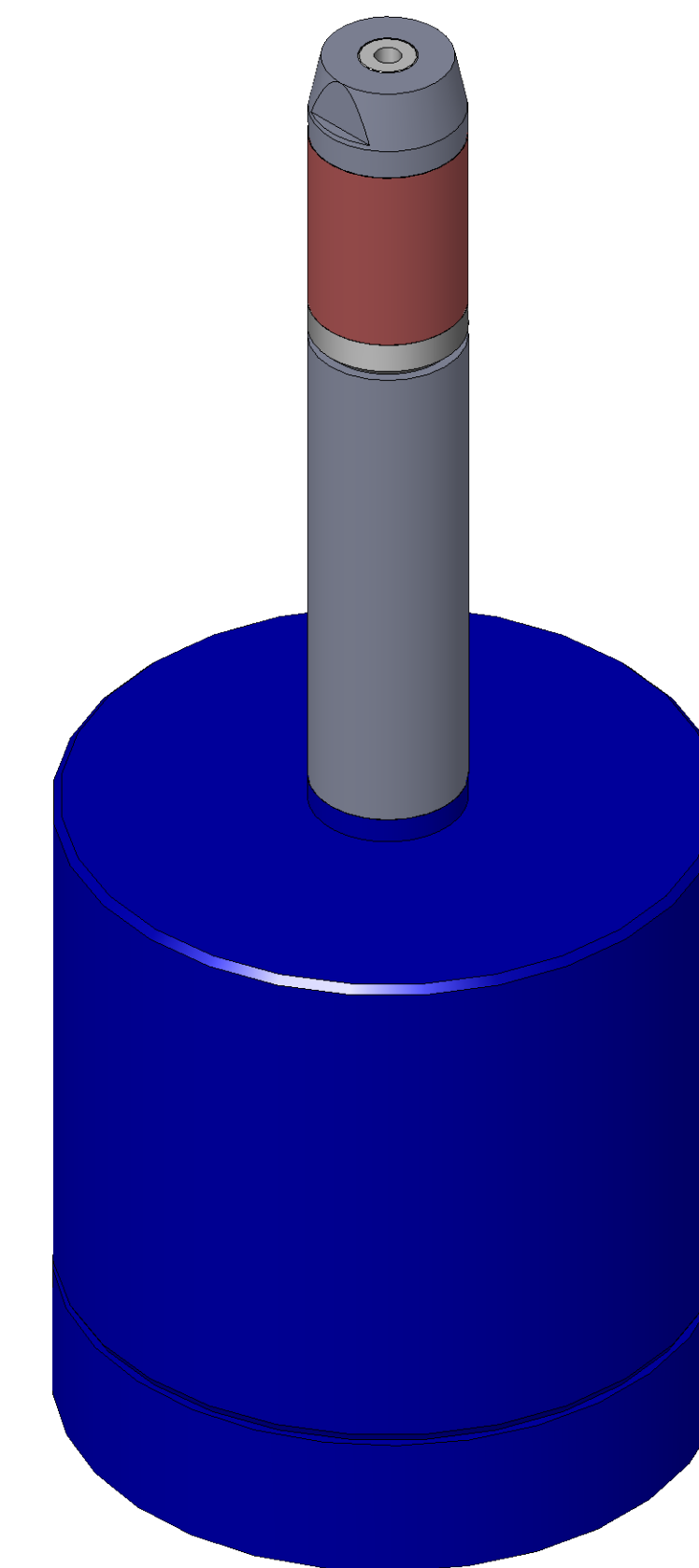


SECTION A-A
SCALE 3 : 1

ITEM NO.	PART NUMBER	DESCRIPTION	QTY.
10	MACH-004180	BODY, CTS, CI30	1
20	MACH-004247	Cap, CTS, CI30	1
30	MACH-004276	Nose, CTS, CI30-AA	1
40	MACH-004417	Washer, CTS, CI30-AA	1
50	MACH-004571	SPACER, CTS, CI30	1
60	MACH-054199	STEM, CTS, CI30-E1.0	1
70	SEAL-004720	Seal, CTS, CI30-AA	1
80	SEAL-005446	CI30-ORING 009	1
90	SEAL-005447	CI30-ORING 119	1
100	MACH-004572	Extension Spacer, CTS, CI30	1



REVISIONS			
REV.	DESCRIPTION	DATE	APPROVED
A	Initial Release	02-02-2026	KM
B	Nose material changed from brass to 316 stainless steel	03-12-2026	KM



SIZE	D	DESCRIPTION	Connect Assembly, CTS, CI30-AA-E1.0
PART NUMBER	CTSC-001464		REV B
DATE	7/01/15	DRAWN BY KM	CHECKED BY KM SHEET 1 OF 1

FILE LOCATION: \\PDM\PDM\R&D Product Development\CTS Connects\CI\Connect Assembly\Standard\CI30\1in Stem Extension\CTSC-001464