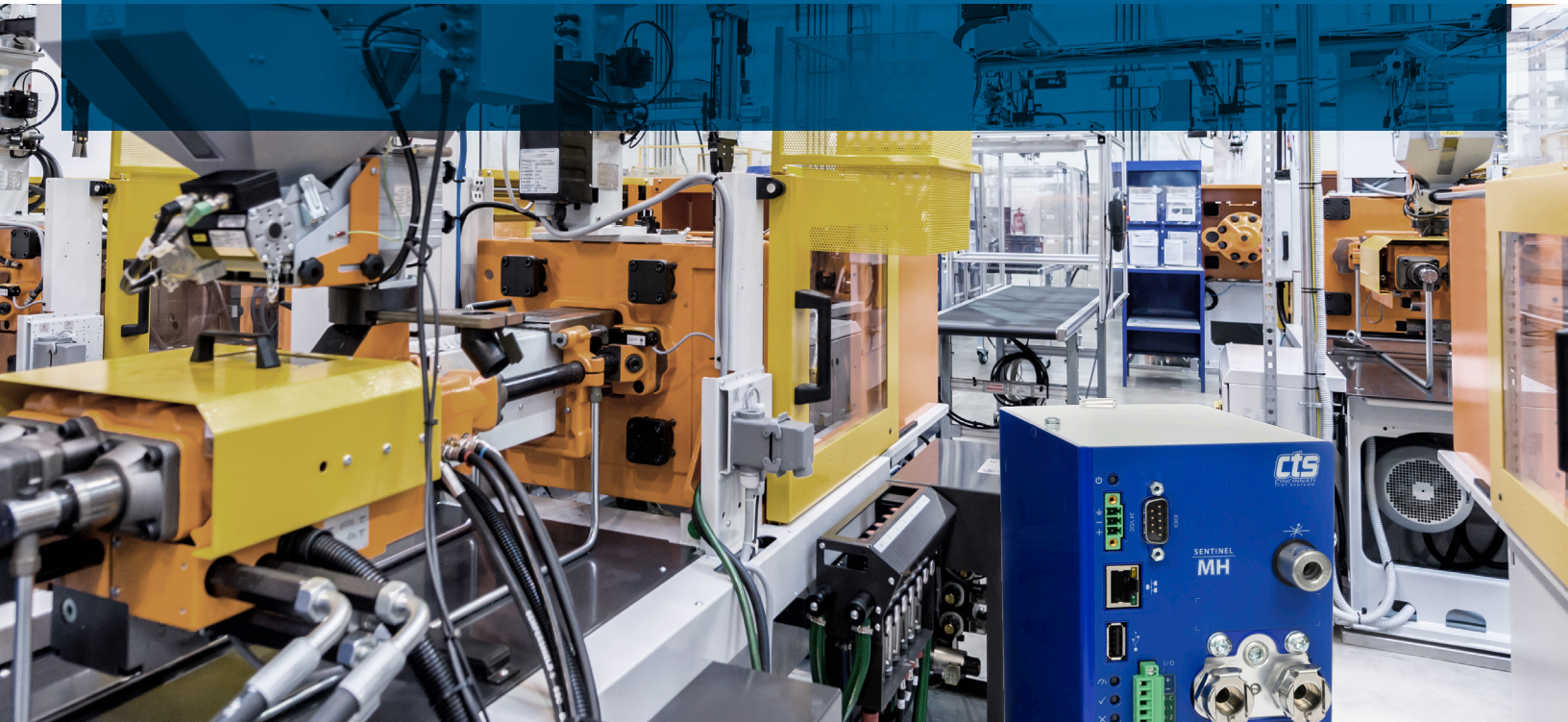




Your Global Leak  
and Function Test  
Solution Experts

# Sentinel MH

COMPACT, HIGH-RESOLUTION INDUSTRIAL LEAK TESTER



The CTS Sentinel MH is a proven leak test solution with thousands of installations worldwide. It provides high-resolution leak test measurements with fast, repeatable results in a compact, modular design. It supports differential pressure decay and mass flow test types with a PC operator interface using CTSnet LT software for easy test sequence setup and instrument management. Additional controls can also be managed through a PLC connection using direction contact, Ethernet/IP, or PROFINET interfaces.

## High-Resolution Leak Testing in a Small Package

The Sentinel MH is the ideal solution when you require a very fast leak test. This requirement is common in several applications within many markets.

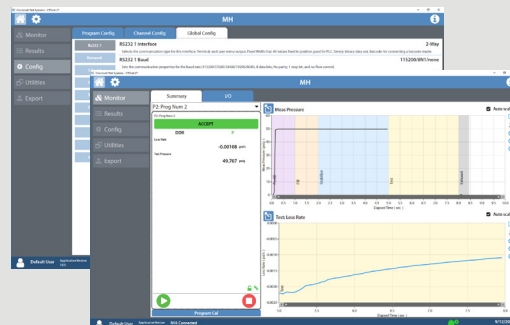
### Test Types

The Sentinel MH is an advanced, high-resolution, multifunction leak test instrument. It supports 32 test programs and stores up to 5000 test results. It is a cost-effective solution for multiple tests. The MH can perform the following tests:

- Differential Pressure/Vacuum Decay –  $\Delta P$
- Differential Pressure/Vacuum Decay –  $\Delta P/\Delta T$
- Mass Flow
- Differential Pressure/Vacuum Decay – Leak Standard
- Differential Pressure/Vacuum Decay - Leak Rate
- Mass Flow – Leak Standard
- Occlusion (Back Pressure)
- High Speed Pressure Decay –  $\Delta P$
- High Speed Pressure Decay – Leak Rate

## NEW: CTSnet LT for Fast, Easy Discovery and Configuration

CTSnet LT is an intuitive user interface that allows easy control of Sentinel MH instruments right from a PC. Using CTSnet LT, you can discover all MH instruments on the network, connect to them, configure all the parameters available on the instrument, then start and stop a test and read the results in real time. You can also upgrade the firmware and backup/restore test programs. Programs can be copied to and from different instruments for faster setup. Configuration details, calibrations and test results can all be exported so you can retrieve historical data at any time.



## Why Use Sentinel MH?

### Modular, distributable system creates scalable installation options

Because the Sentinel MH is compact and modular, you can easily build out to the number of channels you need, cost-effectively. Installation of a leak test instrument close to the part under test is a highly desirable capability because it reduces system volume and allows for a more accurate test result. The MH can be placed where you wish and offers PLC communications via serial or Ethernet/IP or PROFINET.

### Plenty of I/O to meet all your needs

The MH comes with seven inputs and five outputs that are programmable for any function you need.

### Optional electronic regulator

An optional electronic regulator enables a high-speed test with faster stabilization.

### Flexibility with differential pressure test types

The MH supports five differential pressure tests so you can choose the test type that's right for your production line.

### Mass flow supplies additional functionality

The MH supports 7 standard mass flow ranges supplying additional functionality to conduct mass flow leak testing or functional flow testing for your high production testing needs.

---

## Key Specifications

Please see the Sentinel MH datasheet for full specifications.

- 32 test programs
- High resolution
- CTSnet LT PC application interface
- Live data streaming
- Stores up to 5000 test results
- Cost effective leak test instrument

### Can be integrated into a machine

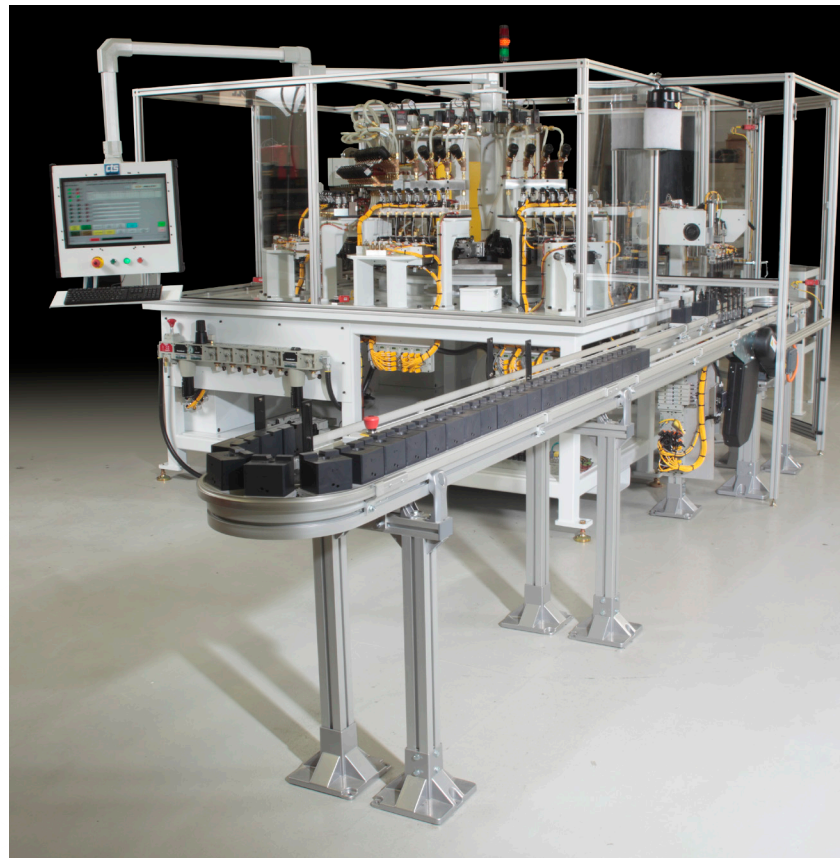
Because it is a small instrument, the MH can be integrated easily into a test station, either in a single bay with manual fixturing, or in a multi-bay setup with automatic fixturing.

### High speed measurement capabilities

Since the MH is designed to fit multiple units into a small space, extreme high production testing at less than 1 second production rates allows multiple units to reside in one test cell. Each unit conducting singular tests on many different test heads gives our customers the high production through-put for 100% testing of every product shipped.

### Tested and proven instrument gives you peace of mind

The Sentinel MH is proven in thousands of installations with CTS customers, providing them with a cost-effective, multi-channel leak test.





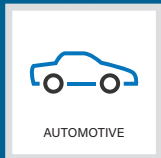
Your Global Leak and Function Test Solution Experts



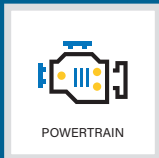
## BETTER TOGETHER

CTS and innomatec are subsidiaries of the TASI Group, within TASI's Product Integrity Division. We are unified by the fact that we are "Better Together". Together, we deliver the broadest leak test portfolio in the industry. Together, we serve our customers through a global network of offices and partners. Together, we will harness the power of the Industrial Internet of Things and bring all of its potential to industrial companies worldwide.

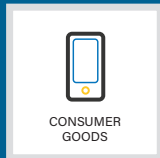
## INDUSTRIES WE SPECIALIZE IN



AUTOMOTIVE



POWERTRAIN



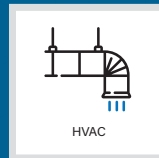
CONSUMER GOODS



MEDICAL



ENERGY



HVAC



© 2022 Cincinnati Test Systems and Sentinel are registered trademarks of Cincinnati Test Systems Inc. All other trademarks are the property of their respective companies. All rights reserved. No part of this publication may be reproduced without the prior written permission of Cincinnati Test Systems. While every precaution has been taken in the preparation of this document, Cincinnati Test Systems assumes no responsibility for errors or omissions. Neither is any liability assumed for damages resulting from the use of the information contained herein. Specifications subject to change without notice. Rev3 December 2022

### CINCINNATI TEST SYSTEMS

Corporate Headquarters  
10100 Progress Way,  
Harrison, OH 45030  
513.367.6699  
www.cincinnati-test.com

### INNOMATEC

Am Wörtzgarten 14  
D-65510 Idstein / Taunus  
Germany  
+49 (0) 06126 / 95 98 66 - 800  
www.innomatec.com